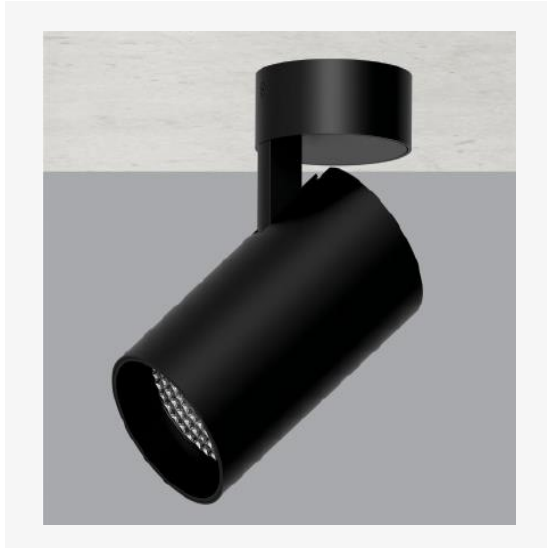


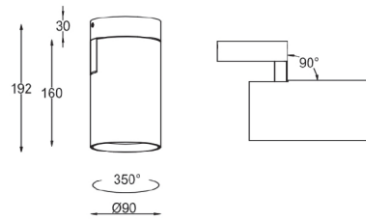
# TENUS 90

ARTECH  
LIGHTING

Part Code: **TRT 28 30 60 CL 90 S BB**



Tenus 90 is an elegant directional surface spotlight, with high quality aluminum housing and discrete hinge design allowing for concise adjustment. Total luminous flux up to 2500 lm with overall luminaire efficacy of 100 lm/W. Supplied with fixed output, DALI digital or phase-cut dimmable driver, optional 3 -hour Basic or EMPRO emergency kit. Forged aluminum heat sink with die-cast white or black bezel.



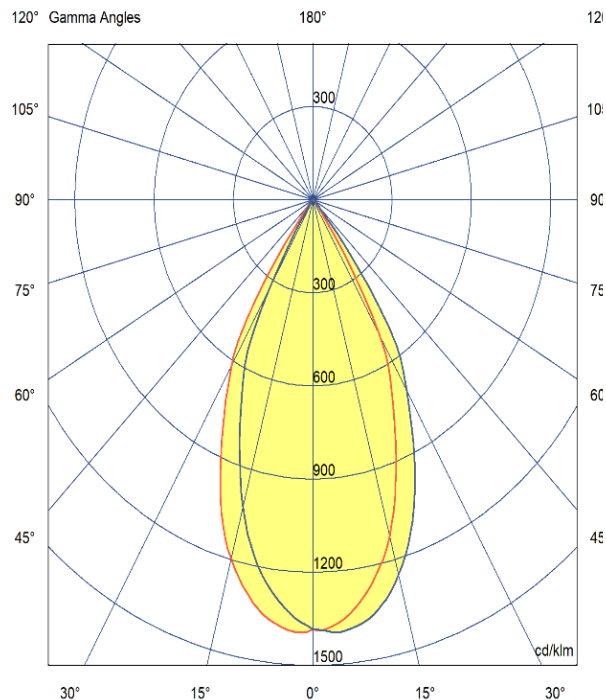
## Production Information

–  
**Physical**  
Mounting Type – Surface  
Length – 192mm  
Diameter – 90mm  
Finish – Black/Black  
IP Rating – IP20

–  
**Electrical**  
Lamp Type – LED  
Wattage – 28 W  
Efficacy – 100lm/W  
Driver – Tridonic/Forge  
Control – Fixed Output

–  
**LED**  
Manufacturer – Phillips Lumileds  
LED Type –COB 1280  
Delivered lumen output – 2800lm  
CCT – 3000K  
CRI – 90+  
MacAdam – < 3  
Service Lifetime – L80/B10 55,000hrs

–  
**Optic**  
60° Beam Angle/ Clear Optic



Artech lighting strives to ensure all solutions are supplied with the latest technology, we therefore reserve the right to make technical and design changes without prior notice. Electrical connected load and luminous flux are subject to initial tolerance of up +/- 10%. Colour Temperature is subject to a tolerance of +/-150 Kelvin.

**St Johns Rd, Meadowfield Ind. Estate, Durham, Co. Durham, DH7 8RJ, United Kingdom**  
**T: +44(0) 191 3787960 E: info@artechlighting.com**

Powered by:

**TRIDONIC**

**MADE IN  
BRITAIN UK  
CA**